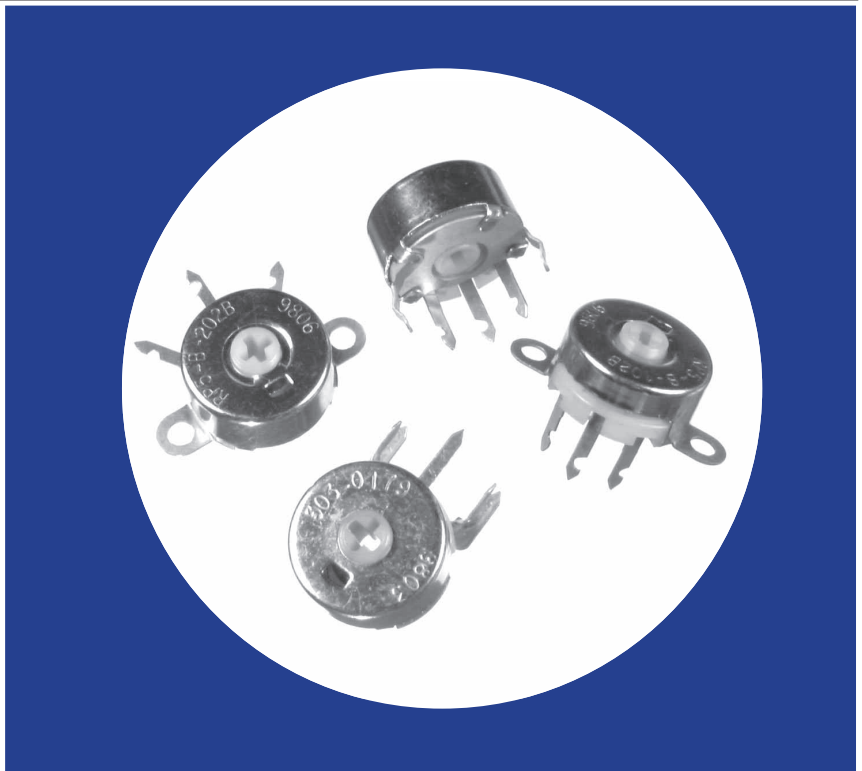


Commercial 3/4" (19mm) Diameter, 2 watt Wirewound Variable Resistor

Features

- Fully enclosed construction
- Four mounting styles
- Long rotational life
- Optional grounded or insulated rotor construction
- Incorporated fixed resistor available
- Available with nylon shaft
- Interchangeable mounting with CTS series 110 preset potentiometers
- RoHS compliant



Electrical and Mechanical Specifications

Resistance Range

1 ohm through 20K ohms (linear taper)

Resistance Tolerance

Standard: $\pm 20\%$

Special: $\pm 5\%$ or $\pm 10\%$

Power Rating, Watts

2 watts @ 55°C derated to no load @ 105°C
mounted on steel panel

1.5 watts @ 55°C derated to no load @ 105°C,
mounted on bakelite panel

Voltage Rating

Terminals to case (insulated types only)

High pot test, one minute — 900 VAC

Operating maximum — 500 VDC

Across end terminals

Determined by resistance value and wattage rating

Resistance Taper

Standard: Linear taper only

Taps Available

None

Incorporated Fixed Resistor

A fixed resistor can be incorporated in the Series 115 at the end of CW or CCW rotation to a minimum of 15% of the total resistance value. The rotation is shortened by an amount proportional to the ratio of the fixed resistor to the total resistance value.

Angle of Rotation

Total Rotation: $270^\circ \pm 5^\circ$

Resistor Adjustment

Standard: Cross slot provided in rotor for screwdriver adjustment.

Special: Molded nylon, screwdriver-slotted shafts which are integral with rotor are available in many lengths in increments of 1/8" (3.2mm) up to a maximum of 2" (50.8mm). Consults with the factory

Mounting Types Available

Printed circuit mounted: Type 115 P

Twist tab mounted: Type 115 T

Snap-in mounted: Type 116 E

Rivet ear mounted: Type 117 R

Terminal Information

Grounded Construction — The grounded construction is supplied without a center terminal and the contactor is connected to the case. This construction can be furnished with one end terminal at either end of the resistance element or with terminals at both ends of the element.

Insulated Construction — The contactor is insulated from the base and connected to the center terminal on the insulated construction. This construction can be supplied with the center terminal and one end terminal at either end of the resistance element or with the center terminal and terminals at both ends of the resistance element.

Rotational Torque

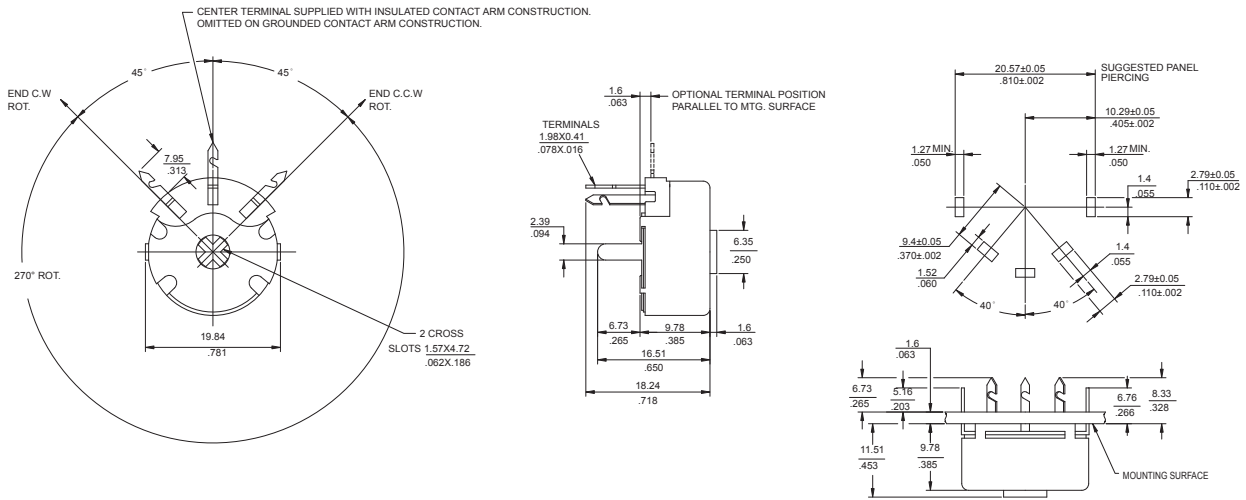
1/2 to 10 in-oz. (36 – 720 gf-cm)

Stop Strength

4 in-oz. (4.6 Kgf-cm)

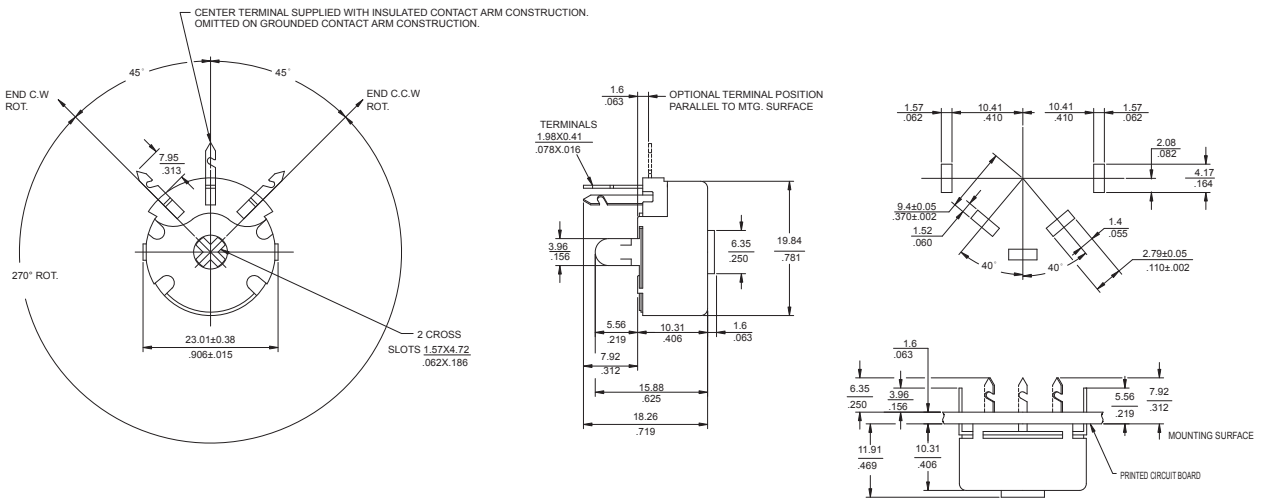
Type 115P, P.C. Mounted

DIMENSION: $\frac{\text{mm}}{\text{INCH}}$



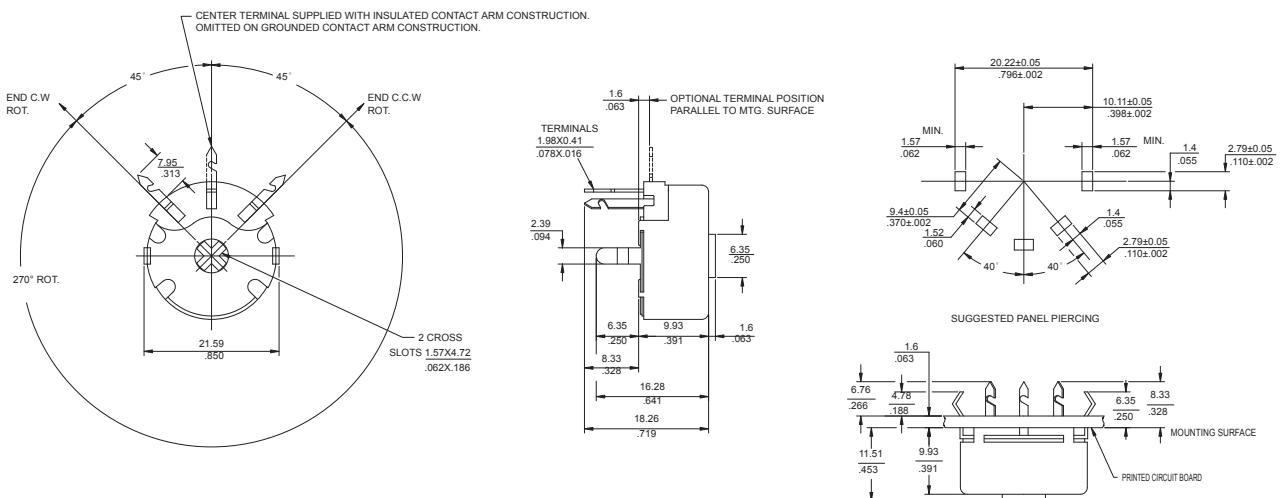
Type 115T, Twist Tab Mounted

DIMENSION: $\frac{\text{mm}}{\text{INCH}}$



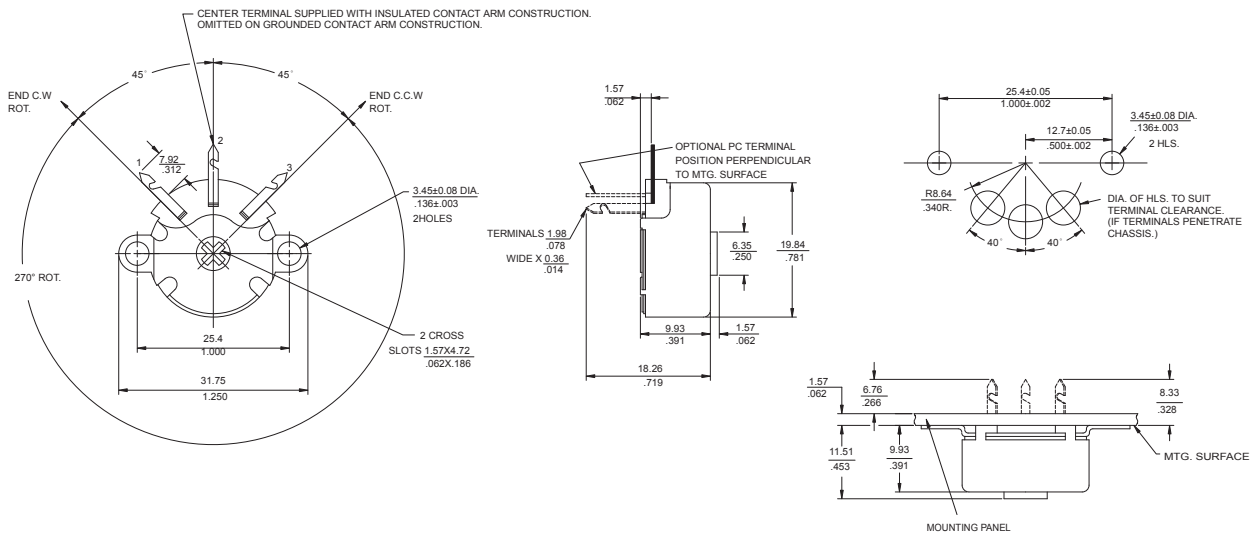
Type 116E, Snap-in Ear Mounted

DIMENSION: $\frac{\text{mm}}{\text{INCH}}$



Type 117R, Rivet Ear Mounted

DIMENSION: $\frac{\text{mm}}{\text{INCH}}$



Ordering Information

